

Senior

Memories

.. ..

1932



Digitized by the Internet Archive
in 2014

<https://archive.org/details/seniormemories191932newb>

Senior

Memories

.. ..

1932

Foreword

We have combined the last issues of "THE BRUIN" and have made a Book of Memories of our high school days. Due to the lack of finances, we have omitted our "Last Will and Testament." But we DO leave to the lower classes our sincerest hope that they will not have to graduate during a "depression."

—THE CLASS OF '32.

MEMORIES



JOHN (JACK) MONTGOMERY SHIELDS, JR.
Our Mascot

MEMORIES



To

MR. FRANK J. ALLSTON

In sincere appreciation of his services to the school, the athletic teams, THE BRUIN, and the Class of '32, we gratefully dedicate our
MEMORY BOOK.

The Faculty

H. B. SMITH	<i>Superintendent</i>
J. M. SHIELDS	<i>Principal</i>
FRANK J. ALLSTON	<i>Civics-Athletic Director</i>
OLA ANDREWS	<i>Mathematics</i>
RUTH BLACKWELDER	<i>Mathematics</i>
MAISIE BOOKHARDT	<i>English-Dramatics</i>
KATHERINE BRADFORD	<i>Science</i>
MUSETTE BRADSHER	<i>English</i>
MRS. ALBERT BRINSON	<i>Commercial</i>
JEAN MOORE	<i>History-Girls' Basketball</i>
MARY MOORE	<i>Commercial</i>
JEANNETTE NANCE	<i>French-History</i>
RALPH RAPER	<i>Science</i>
LAURA ROBERTS	<i>Latin-English</i>
BLANCHE ROWE	<i>English-Student Publications</i>
MRS. H. B. SMITH	<i>Science-Mathematics</i>
HAROLD WHITEHURST	<i>English-Mathematics</i>
ANNIE PICKARD	<i>Librarian</i>

MEMORIES



TOP ROW—TOLSON, STEVENSON, DUNN BOTTOM—LANE, SALEM, RITCHY.

MEMORY BOOK STAFF

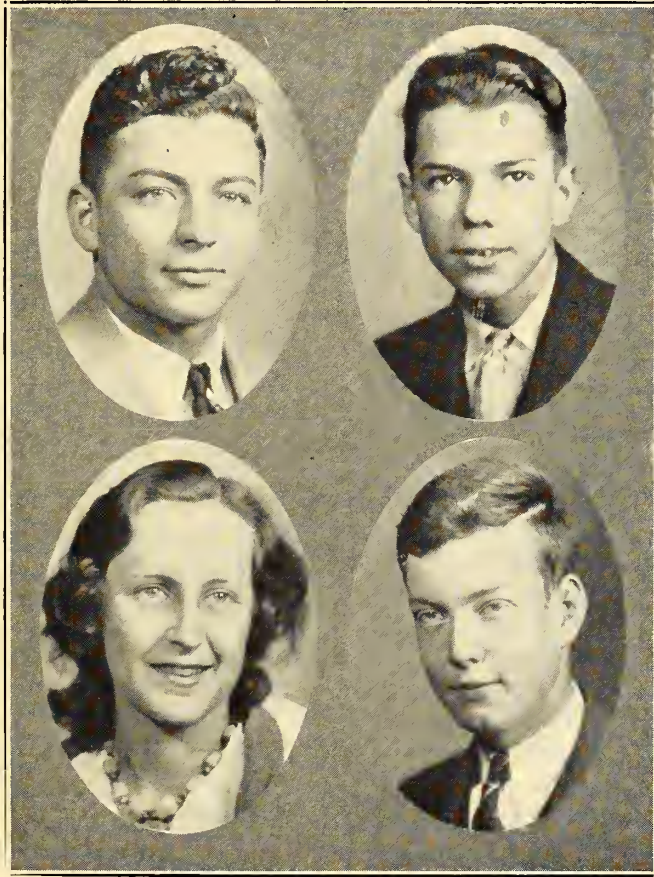
ELEANOR STEVENSON		<i>Editor-in-Chief</i>
ALBERT SALEM		<i>Business Manager</i>
ENNIS LANE		<i>Assistant Editor</i>
MILDRED RITCHY		<i>Assistant Editor</i>
JACK DUNN		<i>Assistant Manager</i>
JACK TOLSON		<i>Assistant Manager</i>
MISS BLANCHE ROWE		<i>Faculty Adviser</i>
ELEANOR NUNN HORACE WHITE	} <i>Features</i>
ALBERT BELL JOYCE FULCHER		
LUTRELLE LAFRAGE MATILDA SCALES		

“THE BRUIN” STAFF

ENNIS LANE	<i>Editor-in-Chief</i>
ALBERT SALEM	<i>Business Manager</i>

Assistant Editors: Jack Aberly, Eleanor Nunn, Nettie Pinnix, Jack Dunn, Jack Tolson, Dick Duffy, Virginia McSorley, Eleanor Stevenson, Joe Patterson, Elizabeth Hanks, Raymond Daugherty, Mary Berry, Alice Poe, Valeria Pridgen, Frances Birsch, Sarah Mitchell, Hilda Jacobs, Billy Dawson, Billy Caroon.

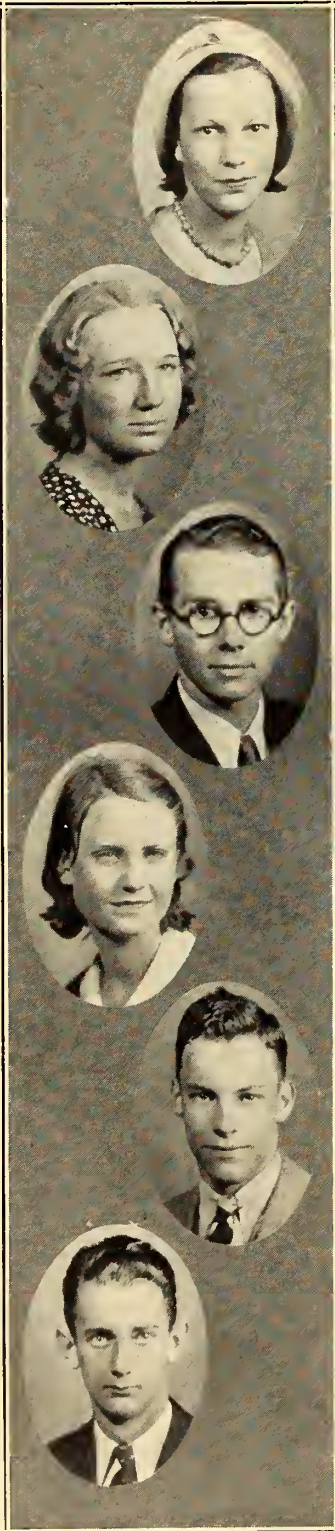
Assistant Managers: Oscar Brinson, Bradford Clark, Virginia McSorley, Genevieve Tolson, Mary Brent Holland, Elizabeth Ammons, Mary Anderson.



Senior Class Officers

- | | |
|-------------------------|-----------------------|
| ALBERT SALEM | <i>President</i> |
| OSCAR BRINSON | <i>Vice-President</i> |
| ENNIS LANE | <i>Secretary</i> |
| ERNEST WOOD | <i>Treasurer</i> |

MEMORIES



SARAH ELIZABETH ARMSTRONG ✓

Is she a pal? I should say! The best you can find. Good-looking? Yes. Everybody like her—especially the boys. Her ambition is to become an artist and we're wishing her success!

"ELIZABETH"

#

IRENE DEAN BARNES

Who's that blond girl that is always smiling? Why that's Irene. She's a good all around sport and we shall miss her. Here's wishing her the best of luck in any career she might undertake.

"IRENE"

#

DONALD W. BASNIGHT

Don has a smile and a friendly word for all. He never worries about the past or the future. We sincerely hope that his life will be one happy voyage in that new sail boat.

"DON"

#

SYBIL MAE BELANGIA ✓

If "Sib" isn't making us laugh at her witty remarks, she's laughing herself at someone else's. She is the kind of a girl that always looks on the sunny side of life, and makes us love

"SIB"

#

ALBERT ROBERT BELL ✓

"The Full House," '32; Debating medal, '32; Hi-Y Club, '29, '30, '31, '32; "Help Yourself," '29; Football, '32; Class Historian, '32.

Who in N. B. H. S. does not know "Scrappy"? He's a "ripping" good pal. He is always included in all the school activities, for they would not be complete without him. We predict success for

"SCRAPPY"

#

NELSON IVES BOWDEN ✓

Hi-Y Club, '30, '31, '32; "The Patsy," '30.

"Skipper's" deep bass voice will be missed in the cheering sections of New Bern Hi. He's always on hand at every athletic contest and is one of our leading "barkers" for advertising plays. We're wishing you lots of luck

"SKIPPER"

MEMORIES

ELIZABETH THOMAS BRAY ✓

When Mark Twain wrote "Innocents Abroad" he must have been thinking of Elizabeth. We'll always remember her running across the campus trying to get to school on time.

"ELIZABETH"

#

OSCAR RUGH BRINSON ✓

Hi-Y Club, '30, '31, '32; Vice-President, '31, '32; Student Council, '30, '32; The Bruin Staff, '31, '32; Class President, '31, '32; Class Vice-President, '32; Chief Marshal, '31.

Oscar is not only good-looking but brilliant. Nature seems to have been partial 'cause she gave Oscar "everything."

"OSCAR"

#

MILDRED MAE CARPENTER ✓

Student Council, '31; Basketball, '30.

"Billie" is one of the best students in the Commercial class. Her blonde hair and blue eyes make her very popular with the opposite sex. Everybody loves

"BILLIE"

#

HELEN LYDIA CHADWICK ✓

Basketball, '31, '32; Hi-Y Club, '32.

Helen is that flashy guard who made the All-Conference basketball team. She charms all whom she meets, girls and boys. Both her lessons and her smile are always ready.

"HELEN"

#

BRADFORD HYMEN CLARK ✓

"The Full House," '32; Hi-Y Club, '31, '32; Secretary, '32; The Bruin Staff, '32; Marshal, '31.

Who's that girl who is right there with her work, good-looking and always cheerful? It's none other than our Bradford, and do we like her? Just ask the students.

"BRADFORD"

#

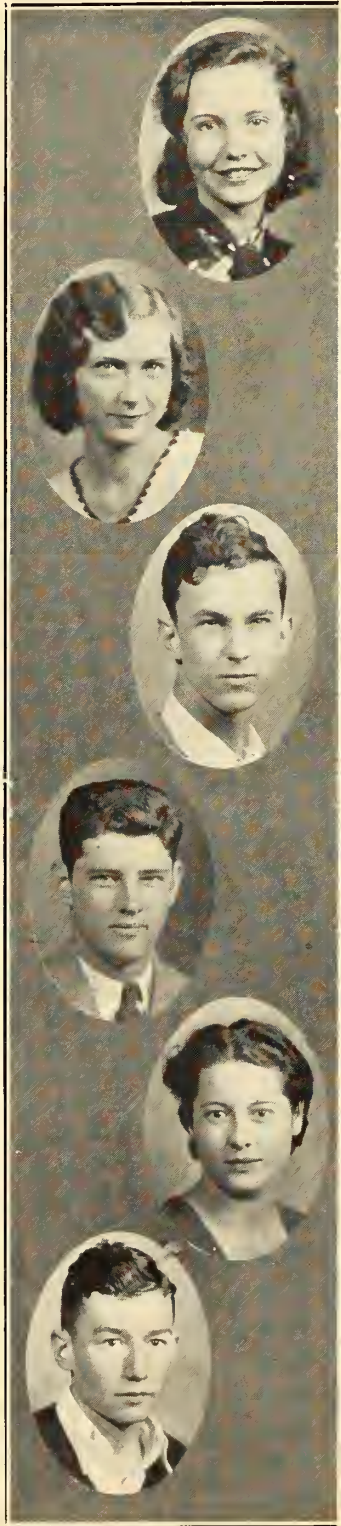
LAURA CONNOR DICKINSON ✓

Laura has a keen sense of humor, a cheerful smile, and a sweet disposition. She's faithful to her work and to her friends.

"LAURA"



MEMORIES



ROSALIE DIXON ✓

Rosalie's that pretty, giggling, gum-chewing gal—a sure cure for the blues. She doesn't ever worry about anything. You will find her in some corner of ole Moses Griffin building, telling her pal, Elizabeth, all about her latest crush.

"ROSALIE"

#

VIOLA STERLING DIXON

Student Council, '29.

We cannot find in the Senior Class a truer, sweeter girl than Viola. She not only has a good disposition, but "brains." We wish her much luck in future years.

"VIOLA"

#

RICHARD NIXON DUFFY

The Bruin Staff, '31, '32; "Help Yourself," '29.

Dick is one of the squarest shooting boys in school. He's a hard worker and THE BRUIN just couldn't get along without his jokes. We feel sure that Dick will succeed and excel in anything he undertakes.

"DICK"

#

JOHN OLIVER DUNN ✓

"Circumstances Alter Cases," '31; Basketball, '31, '32, Captain, '32; Football, '32; Hi-Y Club, '31, '32, President, '32; The Bruin Staff, '32; Memory Book Staff, '32.

Jack, one of our unusually handsome seniors, has made two All-Conference teams this year and has also had his appendix removed. That's a record, isn't it? His lady friends range from freshmen to college co-eds.

"JACK"

#

LELA GORDON ELLIOTT ✓

Basketball, '32; Hi-Y Club, '32.

It has always been Lela's ambition to make her letter in basketball and she has succeeded this year. Besides being a good guard, she is very necessary on the squad for her pep and enthusiasm and ability to cheer up the team. We might add that Lela is a great admirer of the opposite sex.

"LELA"

#

EDWARD FEREBEE

Football, '31.

Who is that handsome boy that a certain young lady is wild about? That's Eddie Ferebee. When Eddie comes up the street everyone asks, "Who is the boy tied to that great big smile?"

"EDDIE"

MEMORIES

JOYCE FRANCES FULCHER

The Bruin Staff, '30, '31, '32; Memory Book Staff, '32; "Help Yourself," '29.

Words fail one in describing Joyce for who can describe a poet! She would be distinguished alone by her poems but when we add charm and personality, we understand why she is an outstanding girl of the senior class.

"JOYCE"

#

RHODA BELLE GASKINS

Student Council, '32; Class Vice-President, '29.

We all like Rhoda Belle! We admire and respect her for doing well anything she undertakes to do. She's dependable and always willing to be called upon. Here's wishing Rhoda Belle a happy, successful future.

"RHODA BELLE"

#

EMMA AMANDA GOWER

Emma's highest ambition is to become president of some large university. If her work in college is as good as it has been in N. B. H. S., we feel sure that Emma's ambition will be fulfilled.

"EMMA"

#

FRANCES PAULINE GRANTHAM

"The Full House," '32.

Frances is a tall blonde who always calls for a second glance. She is sure to get plenty of fun out of life. Pretty and gay—that's

"FRANCES"

#

GRACE MAE HAGOOD

Don't let Grace fool you. Outside of school she is not the quiet, studious girl you think her to be. She's a good sport and always ready for fun. With her disposition and the grades she makes she'll be successful.

"GRACE"

#

HERMAN DANIELS HARDISON

Herman has one of the keenest minds in the Senior Class. He'll always pep you up with his ever-flowing wit. Herman has the ability and, if he applies it, he is sure to make a success of life.

"HERMAN"



MEMORIES



HILDRED DARL HARRISON

Student Council, '31.

The high school will suffer a severe loss at graduation when Hildred leaves it. It will be a long time before another such intellect will be found in N. B. H. S. She has high ambitions and ideals and she sticks to them.

"HILDRED"

#

MELBA ELIZABETH KEENER

Here's one of the reasons why Bridgeton is so popular. Melba, one of the best-looking and most dependable girls in our class, lives there.

"MELBA"

#

MAVIS GREY KOONCE

Mavis is a dependable girl, always true and faithful to everyone. She does her best in her class work and loves to do things for others.

"PETE"

#

LUTRELLE LAFRAGE

Hi-Y Club, '31, '32; Basketball, '30, '31, '32; "Help Yourself," '29; "Junior Carnival," '29.

Who's that little brunette with the great big eyes? She doesn't worry about anything but how long it'll be between dances. And can she play basketball? We'll say!

"LUTRELLE"

#

ENNIS PRIMROSE LANE

"The Full House," '32; "Circumstances Alter Cases," '31; Declamation Winner, '30; Hi-Y Club, '30, '31, '32, President, '32; The Bruin Editor-in-Chief, '32; Class Secretary, '32; Memory Book Staff, '32; Student Council, '31; Assistant Chief Marshal, '31; Basketball, '30, '31, '32.

Our actress, basketball star, class secretary, THE BRUIN editor—well, just add beauty plus brains plus ability plus personality and you've got

"ENNIS"

#

ELBERT ARLINGTON MALLARD

Student Council, '32; "The Full House," '32; Marshal, '31.

Who debates, declaims, writes for THE BRUIN and is always ready for a good time? Elbert, one of the most popular boys in the class of '32.

"ELBERT"

MEMORIES

MARY VIRGINIA MCSORLEY

"Circumstances Alter Cases," '31; "The Full House," '32; Vice-President Student Council, '32; Hi-Y Club, '31, '32; The Bruin Staff, '29, '32.

She is gentle, sweet and kind. Her generous smile will forever trail her. A girl who is dependable and one to whom we look to as a real pal. These qualities and many others go to make up—

"VIRGINIA"

#

ELOISE TERRY MILLER ✓

Boys beware! When Eloise steps out you can't keep from failing. Always smiling—boys love her—girls do, too. All this and a lot more make up our good "ole pal."

"ELOISE"

#

MATTIE LONG MOORE ✓

"Matt" is always laughing and having fun. She is one of the best pals anyone can have. She will always be remembered for her generosity and willingness to help others.

"MATT"

#

ALPHA OMEGA NEWBERRY ✓

"The Full House," '32; "Help Yourself," '29; Football, '32.

Although Alpha is the baby of our class, he is one of the best we have to offer you. His lasting friendship is worth the pains to acquire it. And the boy, himself, is the kind you can't help but admire.

"ALPHA"

#

ELEANOR DRAKE NUNN

Hi-Y Club, '31, '32; The Bruin Staff, '30, '31, '32; "Help Yourself," '29; Class Prophet, '32.

Eleanor is one of the most talented girls in our class. She can always be depended upon for clever and amusing articles for school publication. She is a grand dancer.

"ELEANOR"

#

MARY GENEVA PATE

Mary is our pal. Although she is a little girl, she never fails in what she undertakes to do. All her labor is crowned with success. We believe that this same ability to attain success will go with her through life.

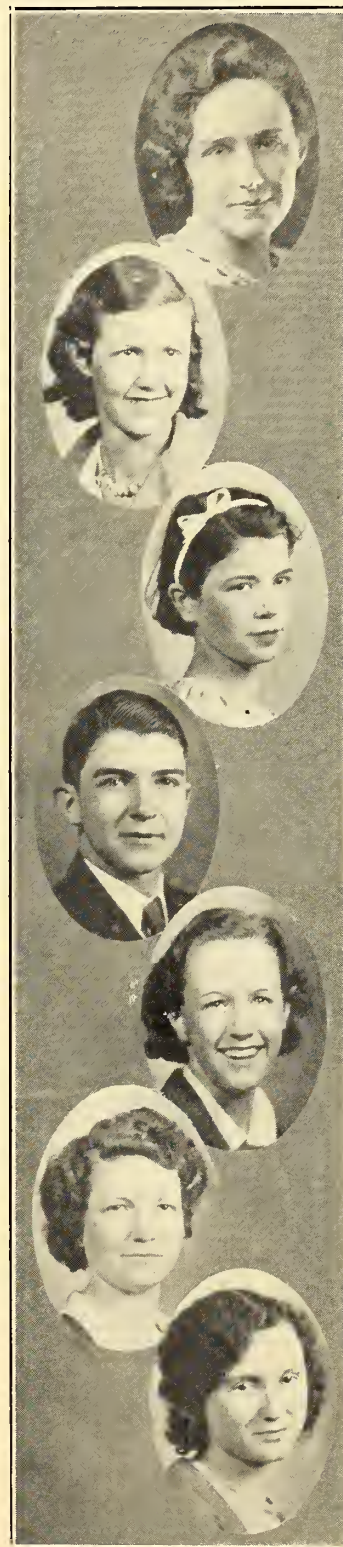
"MARY PATE"

#

LAURA DE LILA WYNNE

She's the curly haired girl, who sits across the aisle. She gets all her lessons and gives everyone a smile.

"LILA"



MEMORIES



ROSA LEE PETERSON ✓

Rosa Lee is that girl in the freshly laundered dress. She always looks neat, clean and orderly. With her ability she will make somebody a perfect stenographer.

"ROSA LEE"

#

VIDA MAE PETERSON ✓

Student Council, '31.

Vida Mae is one of our *natural* blondes. She manages both her school affairs and love affairs with perfect ease. We're wishing her success with her Carolina freshman.

"VIKIE"

#

EDNA EARLE PINER ✓

Occasionally we meet people who continue to grow on us because of their unfailing good humor, ready smile and understanding nature. Such a person is our

"EDDIE"

#

NETTIE HUBA PINNIX ✓

"The Full House," '32; "Circumstances Alter Cases," '31; Basketball Girls' Manager, '31; Hi-Y Club, '30, '31, '32; Treasurer, '31; Student Council, '31; The Bruin Staff, '31, '32.

Yes, that's Nettie. That stylish, black-headed girl all dressed up and tearing down the street in a green Chevrolet. It looks as if she rides all day, but she always manages to make good grades for she has brains.

"NETTIE"

#

EMMA MARION PUGH

Here's to a sweet little blue-eyed girl who is always seen with "Billie." Emma is one of those girls with a sunny disposition and a ready smile for everyone. She's always ready for fun and is everybody's friend.

"EMMA"

#

JOSEPH JOHN RACHIDE

The Bruin Staff, '31.

In Joe we always find dependability and thoroughness that mark him as an outstanding senior. He is a steady worker and always ready to offer his best to help his classmates in any situation which might arise.

"JOE"

MEMORIES

HELEN OPRAL RAGAN ✓

One would have to go far to find a truer and better friend than Helen. Being of a jolly and lovable nature, her circle of friends is large and lasting. Those who know her love her and count it a privilege to be numbered with her friends.

“HELEN”

#

MILDRED MONROE RITCHY ✓

“The Full House.” ’32; Basketball, ’30; Memory Book Staff, ’32.

If you are in trouble, Mildred’s for you—If you want fun, she’s with you—If you need a friend, she’s near you—That’s

“MIDGE”

#

ALBERT MCCALL SALEM ✓

Class President, ’29, ’32; Hi-Y Club, ’29, ’30, ’31, ’32; The Bruin Staff, ’29, ’30, ’31, Manager, ’32; Debating Team, ’32; Marshal, ’31; Manager Memory Book Staff, ’32.

What would we do without Albert? He’s just as necessary around this school as the buildings. If you want a class president, BRUIN manager, publicity agent, debater, or just a general efficient worker, page

“ALBERT”

#

WILLIAM HENRY SCOTT ✓

Bill is a true pal. If he has ten cents he’ll lend you five. We will always deem it a privilege to be included in his list of acquaintances.

“BILL”

#

EARLE SMITH ✓

“Happy” doesn’t deceive his nick-name. He is a real sport and appears to be always—

“HAPPY”

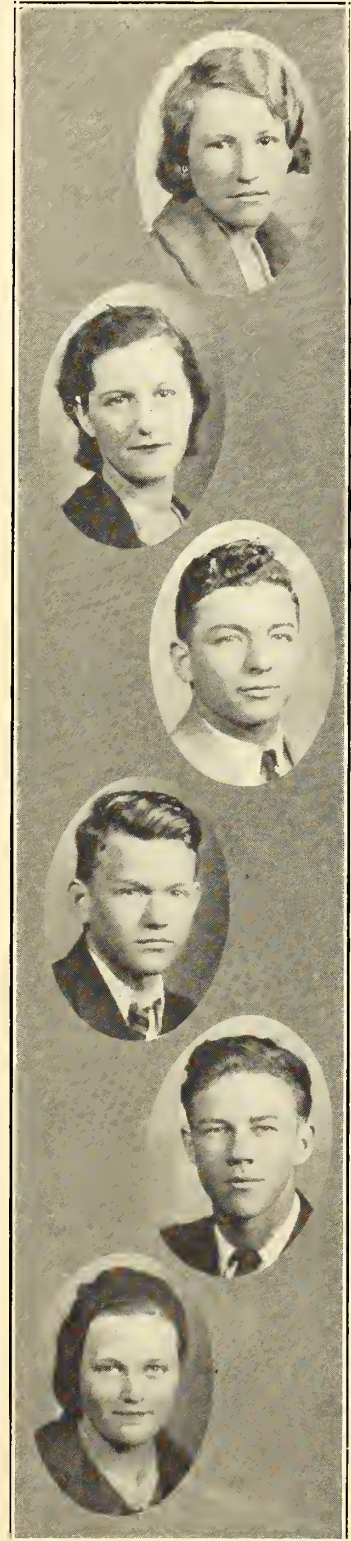
#

IDA THOMAS SMITH ✓

Student Council, ’29.

Ida is one of the busiest girls on the campus and also one of the best friends anyone could have. We’ll always remember Ida “selling” candy. Here’s to a good sport and friend.

“IDA”



MEMORIES



BLANCHE CHARLOTTE STALLINGS ✓

Basketball, '30, '31, '32; Hi-Y Club, '32.

Blanche is one of the best sports in the school. She has interests reaching from basketball to "holding down" the candy stand. Ole N. B. H. S. loves Blanche and hates to see her leave.

"BLANCHE"

#

ELEANOR DUNCAN STEVENSON ✓

Basketball, '29, '30, '31, '32, Captain, '32; Hi-Y Club, '30, '31, '32; Vice-President, '31, '32; The Bruin Staff, '29, '30, '31, '32; "Help Yourself," '29; Memory Book Editor-in-Chief, '32.

Who's that girl that rings all the baskets, the girl with the looks, brains and personality? Why that's Eleanor—the sweetheart of New Bern Hi.

"ELEANOR"

#

ELEANOR LEE SUTTON

Eleanor is the best kind of friend and sport. Her pet hobbies are tennis and music. Whenever she enters a room she is immediately besieged by a crowd begging her to play the piano. And what's more, she's the composer of our class songs.

"ELEANOR"

#

GEORGIA ANNA SWINDELL ✓

Student Council, '31.

Do gentlemen still prefer blondes? Yes, some blondes, and our Georgia's one of them. She is popular and lovable.

"GEORGIA"

#

CHARLES F. TAYLOR ✓

Charles is the joy of all the high school pupils, for he has unusual sense of humor. Everyone likes him 'cause he keeps us laughing. And just try to find out what his middle name is.

"CHARLES"

#

WOODROW TINGLE ✓

Here's to "Twinkle," that good old pal with a smile for all. Although he came to us late, we soon felt as if he were one of us. By his hard work he became known to us all, and we surely hate to lose

"TWINKLE"

MEMORIES

JOHN JARVIS TOLSON, III.

Football, '31, '32; Basketball, '31, '32; Baseball, '32; Debating Team, '32; Declamation Winner, '30; Hi-Y Club, '29, '30, '31, '32; Treasurer, '31; Class Secretary, '30; "The Full House," '32; "Circumstances Alter Cases," '31; "Help Yourself," '29; Marshal, '31; Memory Book Staff, '32; The Bruin Staff, '31, '32; Older Boys' Conference for Carolinas, Secretary, '32.

Jack has the distinction of having made a letter in all sports and also in debating this year. Besides that he's our star actor, a good student, and quite a "ladies' man." He'll probably be a sailor as he has a girl in every port.

"JACK"
#

WILLARD EARLE TURNAGE

Student Council, '32.

Here's to Willard, the faithful student! In work or pleasure he's right there with that smile. Everyone likes him. May he succeed in the future as he has in the past.

"FLOSSIE"
#

MACIE CRYSTAL WADE

Student Council, '31, '32.

Macie's a pretty brunette, and very popular with everyone. Her work is always neatly done and we are sure she'll be a very capable stenographer.

"MACIE"
#

LULA MAE WHITFORD

Student Council, '29, '30, '31, '32.

Lula's the speed demon of the typing class. She's right there at her typewriter when any special contests are being held. She does her best in all her other subjects, too. She's sure to succeed.

"LULA"
#

ADA MAY WILLIAMS

Hi-Y Club, '31, '32; Student Council, '32.

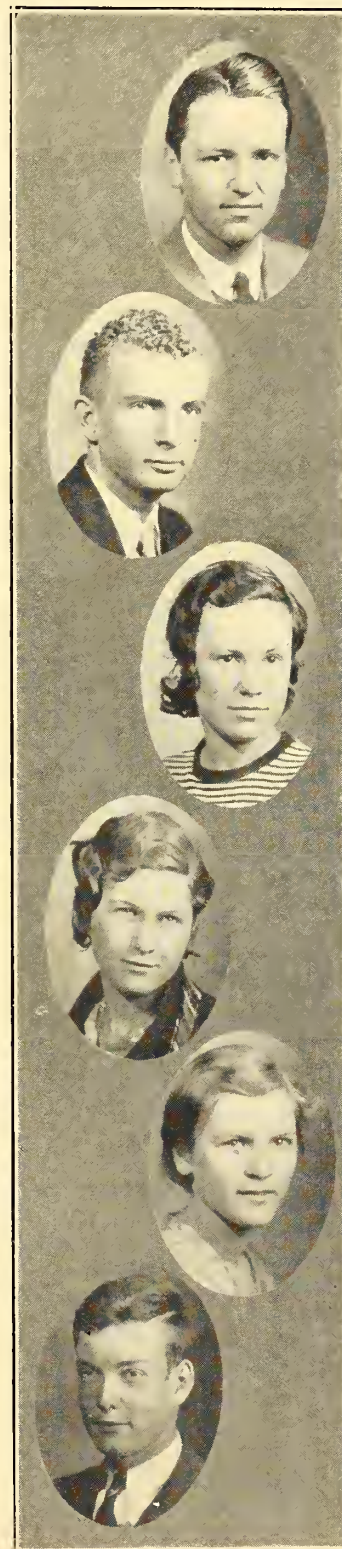
Ada is the little girl whom everyone likes and who likes everyone. She is a game sport and always willing to help someone in need. We feel sure that success and happiness await her in the future.

"ADA"
#

ERNEST HARVEY WOOD, JR.

"The Full House," '32; Football, '32; Hi-Y Club, '29, '30, '31, '32; Debating Team, '32; Class Vice-President, '30; Class Treasurer, '32.

In Ernest we find the ideal high school senior. His speaking and musical talents linked with his excellent scholarship, his ever persevering spirit, and his long list of friends mark him as an outstanding student.



MEMORIES

JOHN MILTON ABERLY ✓

"The Full House," '32; Student Council, '31; Hi-Y Club, '30, '31, '32; The Bruin Staff, '32; Baseball, '32.

You can always depend upon Jack. He has always made good grades, but this year we've learned that he's quite an actor, writer, baseball player, and a "power" with the ladies.

"JACK"

#

LEE CAHOON ✓

If you haven't heard one of Lee's deep solos, your education in New Bern Hi is not complete. He won the contest in Greenville and we're expecting big things of

"SOLO"

#

CLESSON PARROTT MOORE

Our new student from Swansboro—ole studious Clesson, whom we have learned to like so well, always meets the standard of friendship and duty.

"CLESSON"

#

DONALD PAUL

Donald's the big boy with the big heart. Perseverance makes him one of our best commercial students.

"DONALD"

ALMA MAE NELSON

Just a quiet, dependable girl, liked and respected by all her classmates. Alma always follows the call of duty willingly. May she find success in every walk of life.

"ALMA"

#

WILLIAM D. PERRY ✓

Student Council, '30, '32.

Easy to make friends with,
Hard to break friends with,
Best pal you know of—that's

"BUD"

#

HORACE WHITE

Hi-Y Club, '32; Football, '32; Baseball, '31, '32; Student Council, '32.

Horace is called the prodigy of 11-B. And besides making 1's and 2's on all his subjects he's right there on the baseball diamond and an all-around "good egg."

"HORACE"

#

MATILDA HACKBURN SCALES ✓

Hi-Y Club, '30, '31, '32; The Bruin Staff, '30, '31, '32; Memory Book Staff, '32.

She is original and unusual and for that reason pupils sit wide-eyed when she reads her poems and compositions. The world will surely listen to what she has to say.

"TILLIE"

STUDENTS RECEIVING CERTIFICATES

BELL, EVERETT

BRINSON, EDWARD ✓

CARPENTER, PRIMROSE ✓

ELLIS, GEORGE ✓

HARVEY, NATHAN

HILL, WOODROW ✓

IPOCK, LENA

SMITH, MARVIN ✓

TINGLE, CLETA

WIGGS, DAN ✓

Class History

We entered New Bern High School in the fall of 1928 ninety-one strong. As the proverbial freshmen we were awed by the grim upper classmen. In need of expert guidance we elected Albert Salem our class president. The high light of the year was the trip to Raleigh.

Next year we came back, proud Sophomores, arrogant and condescending toward the freshmen, but humble enough to the juniors and seniors. This year we elected Oscar Brinson as our president. We wound the year up by giving the sophisticated seniors a delightful picnic.

Returning again in the fall we found ourselves Juniors. Reelecting Oscar Brinson as our president, we set out to face the perils of another year, the largest of which was the Junior-Senior banquet. We gave a highly successful play, "Circumstances Alter Cases," to help defray the cost of the banquet. On May the 8th we entertained the seniors at the traditional affair and wished them success in their future life.

At last: Sophisticated Seniors. After struggling ten years towards the goal, we reached it. Electing Albert Salem president we set out to wind up our career in a blaze of glory. The class presented "The Full House," a three-act play which was a huge success. This year we were entertained by the juniors at a delightful banquet. The graduation exercises being held, seventy-one of us will set forth to face the perils of the world.

Senior Statistics

Prettiest Girl	FRANCES GRANTHAM
Best Looking Boy	OSCAR BRINSON
Most Popular Girl	ELEANOR NUNN
Most Popular Boy	ALBERT SALEM
Best Athlete (Girl)	BLANCHE STALLINGS
Best Athlete (Boy)	JACK TOLSON
Most Attractive Girl	LUTRELLE LAFRAGE
Most Attractive Boy	OSCAR BRINSON
Wittiest Girl	ELEANOR NUNN
Wittiest Boy	HERMAN HARDISON
Most Dependable Girl	VIOLA DIXON
Most Dependable Boy	ALBERT SALEM
Best All Around Girl	ELEANOR STEVENSON
Best All Around Boy	JACK TOLSON

Class Prophecy

Not long ago I received from Mildred Carpenter, President of the Alumni Association, an announcement of an alumni meeting of the Class of '32. The announcement stated that the meeting was to be an informal reunion in the newly erected "Stevenson Memorial," a fine structure recently endowed by our former classmate, Eleanor Stevenson who, after playing professional basketball for two years, made several million dollars and remembered her home town in such an outstanding manner.

After receiving this announcement I grew excited over the prospect of seeing all my old cronies and how the years had changed them. I called my still faithful side kick, Lutrelle LaFrage, who although she is now thriving on an enormous fortune left her by an uncle in Australia, and is constantly surrounded by suitors, stoops to honor me with her presence. She was enthusiastic over going also and when the night finally arrived she came by for me in her long, slinky Dusenbergs.

As we approached the "Stevenson Memorial," I saw a crowd of people standing out in front of the gigantic edifice. When we reached the group, we recognized many of our old friends: Rosalie Dixon, who won the world chewing gum title, was there with Elizabeth Armstrong, who is now married to the president of the Norfolk Southern Railway Company. We stopped and spoke to them and then entered the building. The auditorium into which we were ushered was massive and was lit from end to end with lights, brightly glowing. There was a microphone on the stage and we saw none other than Albert Salem, business manager of Westinghouse Corporation, presiding over it. After many efforts he finally quelled the mob and then gave a short speech of welcome. He then proceeded to tell us a few things about our various classmates who were unable to be there.

Joseph Rachide, owner of the Inter-National Army and Navy Chain Stores, was attending a buyers convention in Paris and consequently could not get there. Ida Smith was on her honeymoon trip around the world and, of course, she didn't even want to be present.

Just at that time there was loud commotion in the hallway and we turned to see the reason for the disturbance. Nettie Pinuix swept into the room, attired in the latest Parisian fashions, followed by her pet Pekinese and her husband, the Count De Ceit (incidentally he was formerly Dick Duffy). Amid much bustling they were finally seated and the excitement gradually subsided. However there were more surprises for us. Albert Salem announced that we were to hear from Kate Smith Sutton (Eleanor Sutton), the "Songbird" of the Southeast, and a brilliant radio star. We always knew Eleanor could play a piano, but she held out on us as far as "warbling" was concerned.

Mr. Salem, after the singing was over, informed us that we were to vote for officers for the Association. Immediately Ernest Wood, candidate for Governor, was nominated for President; Herman Hardison, author of Spelrite Dictionary, was put up against him. Now followed the nomination of Woodrow Tingle, prominent farmer of near New Bern, for Vice-President, with Dan Wiggs, a big-shot from Chicago, against him. Willard Turnage, now an executive in the Western Onion Service Corporation, ran against Lula Whitford, "Queen of the Taxis," for Treasurer. After the voting we congratulated the new officers, who were: Ernest Wood, President; Woodrow Tingle, Vice-President; Lula Whitford, Secretary and Treasurer.

The business part was then over, so the remainder of the time was spent in chatting with our old friends. We learned that Macie Wade and Sybil Belangia were running a millinery shop in New York City, and Emma Pugh and Laura Dickinson are mannequins for the huge department store run by Clesson Moore, "Moore & Moore."

William Henry Scott has become a millionaire since he opened up the Rhems-to-New Bern Limited Airplane Service. Planes are loaded with passengers from here to Rhems daily.

In spite of Viola Dixon's high mentality, she did what was to be expected—took the walk down the aisle. However, she looked happy.

Jack Aberly is now a Senator. His experiences in high school were probably the stepping stones to his success.

Emma Gower is the present President of Vassar. We always knew she'd get somewhere with that brain.

Hildred Harrison is married and her husband is a Professor of Hypkly at Columbia University.

Ennis Lane is one of Hollywood's most promising (yeah—she promises, but that's all) actresses. She recently co-starred with Jack Tolson, "America's Lover," (and to think one never knew it!) in "Hold

MEMORIES

Your Man." They were splendid. Mr. Ennis Lane, excuse me! I mean Edward Ferebee, is a director and he directed the last production. All three work well together—strange to say.

Rhoda Belle Gaskins and Alma Nelson are welfare workers. They have done a great deal for the general improvement of our city.

Woodrow Hill is a broncho-busting cowboy out west. He seems to like the ol' hills pretty well and hasn't been back in five years.

Nelson Bowden is rolling in wealth. He is associated with Bowden's International Fish Market and they make money on a large scale (?)

Grace Hagood is one of the star radio attractions from station B.U.N.K, New Bern, and her announcer is none other than Marvin Smith.

Lee Cahoon is a favorite on Broadway. He took it completely by storm singing "Would That I Were a Tender Apple Blossom," at the opening of Elizabeth Bray's first starring production. She has gone over big in several musical comedies.

Irene Barnes, Rosa Peterson, Lena Ipock and Lila Wynne are in a chorus in a burlesque show on the Great White Way.

Albert Bell is an outstanding criminal lawyer and just won a case against one of the biggest lawyers in the United States. You remember how he used to debate.

Don Basnight is a detective in New Bern Yard.

Helen Chadwick has been married three times and divorced twice. Her theme song is "How Long Will It Last?"

Ada Williams is in the Fiji Islands, collecting material for her latest novel.

Lela Elliot is a great trapezist in a circus (she always did have high aspirations), and Mavis Koonce is teaching school in Horner's Corner.

Earle Smith is a barker at a side show in the same circus Lela's with.

Frances Grantham has captured the title of "America's Sweetheart," and Mildred Ritchy is acting as her publicity manager.

Cleta Tingle has danced her way into the hearts of London and Berlin. She and her partner, Horace White, have a *very individual style* of dancing which is *very captivating*.

Charles Taylor is in Hollywood doubling for Harold Lloyd.

Mary Pate, Helen Ragan and Edna Piner are touring in Europe.

Bud Perry is world's heavy-weight champion. Donald Paul is his manager and they're getting ready for another big bout.

Alpha Newberry is running the Teacherage. What a break to get to see all those good-looking teachers.

Melba Keener is mayor of Bridgeton and Matilda Scales is a Missionary in Africa.

Virginia McSorley is a comedienne. She and Elbert Mallard have just teamed up and are steadily progressing.

Eloise Miller has been studying Entomology and has completed a book on "*Knats*."

Jack Dunn is a real estate agent and has helped the boom that hit New Bern.

Oscar Brinson has been made president of a firm in Wall Street.

Blanche Stallings is physical education director at a girls' school.

Georgia Swindell is buyer for an exclusive Ladies Shop in New York and has been to Paris three times since last year. Gentlemen *do* prefer blondes!

Bradford Clark is a first grade teacher. She teaches those kids all about the alphabet from A to Zee.

Of course you remember Eleanor Nunn, the belle of the high school, well, she's absolutely put Texas Guinan out of business as a night club hostess, and she's still going strong.

When we had talked over everyone in our class, Joyce Fulcher, world renowned poet, presented each of us with a bound copy of her latest poems. Then bidding everybody a fond farewell, we came home until another such meeting.

Class Poem

*Shoulder to shoulder, hearts filled with devotion,
 With purpose not aimless, but earnest and true,
 United by all of the ties of deep friendship,
 We bring, New Bern High, our homage to you.
 We'll stand by you loyally, long and unending,
 Loyalty which will be firm, will be sure;
 Devotion we pledge you which never can perish,
 And love which through all coming time will endure.
 In all that we do, we shall never forget you;
 Each member will strive to gain honor, gain fame,
 Not merely to satisfy selfish ambitions,
 But to add honor to your beloved name.
 Ever beside us to lead t'ward the highest,
 Ever beside us to lead t'ward the right,
 You, in the years now dim in the distance,
 Will be, New Bern High, our clear guiding light;
 And with courage undaunted, we'll march ever onward
 Up the heights to be won, along paths strange and new.
 For honor, devotion, love, friendship and wisdom
 We will, New Bern High, be indebted to you.*

—JOYCE FULCHER.

GOOD-BYE

*Good-bye to the good ole times we've had,
 And to all things that we've been a part;
 They will linger as something beautiful,
 Forever in the depths of our heart.*

*Listen! Do you hear that last bell ring?
 Do you hear what it seems to say?
 "I brought you to school as kids long ago,
 But now—I must send you away."*

—MATILDA SCALES.



JUNIOR CLASS

LUMUEL CANNON *President*
 BETSY WILLIAMS *Vice-President*
 BILLY BRADY *Secretary*
 MILDRED TYSON *Treasurer*

CLASS ROLL

ARANT, DURWOOD	CHAPMAN, MARGARET	HOLTON, FRANCES	NUNN, MARY
ARPIN, RUTH	CARAWAN, VELMA	HUMPHREY, ELEANOR	POE, ALICE
AVERY, SHIRLEY	CHANCE, JAMES	IPOCK, SADIE MAE	PUGH, CAROL
BASNIGHT, GENEVIEVE	CONNOR, WOODROW	JONES, MARGARET	PETERSON, JACK
BASNIGHT, JESSIE	DAIL, MILTON	LAFRAGE, BRIGHAM	PRIDGEN, VALERIA
BAXTER, BENNY	DANIELS, LENWOOD	LANGSTON, CATHERINE	PURIFOY, OSWALD
BELL, LEON	DUNN, JOHN FRANK	LILLY, VINCENT	RAGAN, JAMES
BELL, LEWIS	DODSON, VIRGINIA	LAMB, RUTH	RHODES, MARJORIE
BERRY, MARY	EDWARDS, AGNES	MARTIN, SARA	RHODES, MAY LEE
BLANDFORD, ROBERT	ELLIS, MARGARET	MEADOWS, FRANCES	ROWE, ELINOR
BROOKS, SAM	EYERHART, CLYDE	METZ, WALTER	SMITH, HENRY W.
BUNTING, EMILY	FOSTER, HARRY	MITCHELL, SARA	SPARROW, DON
BAYLISS, NORFLEET	FULLER, ANDREW	MOHN, HELEN	STEWART, FERDINAND
BENTON, RUTH	GUTHRIE, EDITH	MANN, LEONARD	STYRON, FLORENCE
BENTON, NOLA	GASKILL, EMMIE	MEGOWAN, MARGARET	STYRON, FRANCES
BLEDSON, JAMES	GASKINS, IDA BELLE	MASON, ALBERT	SHAPOU, IDEL
BOYETTE, LILLIAN	HANKS, ELIZABETH	MITCHELL, ELDRIDGE	SMITH, MARIE
BOYETTE, CLYDE	HARDISON, ELIZABETH	NEELY, JUNE	WEEKS, MICAHAH
BARKER, WILLIAM	HAGOOD, WALTER	MCDANIEL, MARY	WILLIAMSON, WILBUR
BELANGIA, CLYDE	HOTT, THOMAS	MORTON, LILLIE MAE	WILLIS, DAVID
BOYD, JULIA	HAYES, HUBERT	NASSEF, EDDIE	

MEMORIES



GIRLS' BASKET-BALL TEAM

*Top—Coach MOORE, NUNN, LANE, LaFRAGE, MEADOWS, ANDERSON, Manager PUGH.
Bottom—WILLIAMS, STALLINGS, CHADWICK, ELLIOTT, Captain STEVENSON.*



FOOTBALL SQUAD

Front Row, left to right—ELMER LANSCHIE, RAY DAUGHERTY, H. SMITH, HURTT, WHITE, ODOM, TOLSON, TAYLOR, BRYANT, RICHARDSON. Second row—E. STALLINGS, CANNON, METZ, BAXTER, NEWBERRY, FULLER, R. SMITH, BRADY, DUNN, Captain BRINSON. Third row—M. SMITH, WOOD, D. STALLINGS, BELL, PARKER, HUGHES, CRUMP, Coach ALLSTON.

MEMORIES



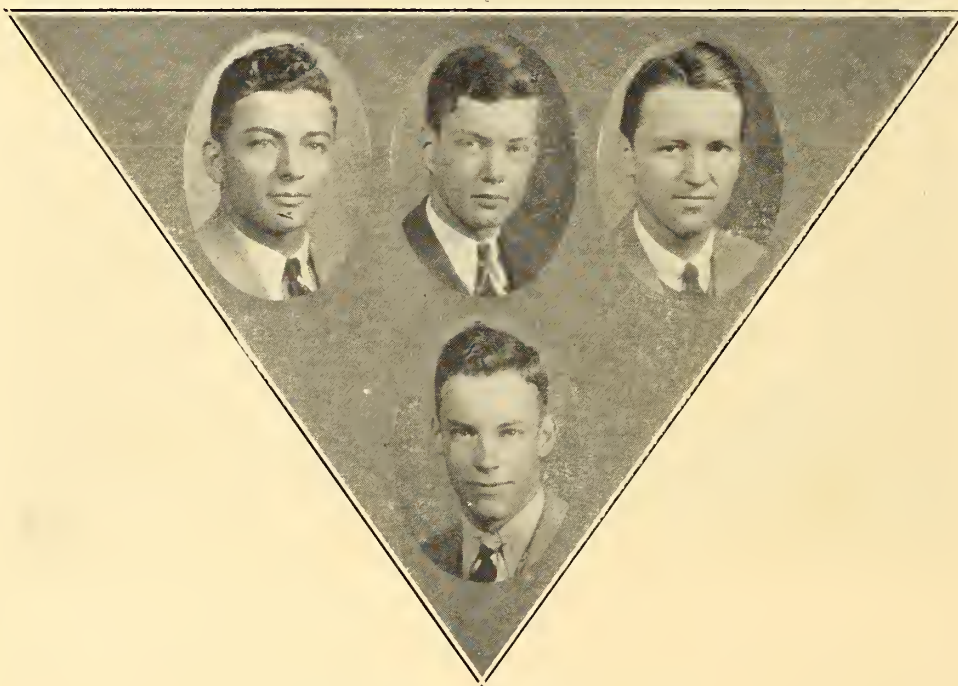
SOPHOMORE CLASS

ALMA HALL *President*
 RAY DAUGHERTY *Vice-President*
 ALEX MEADOWS *Secretary*
 ALLEN PATTEN *Treasurer*

CLASS ROLL

ABERLY, BILLY	FARROW, BLANCHE	LANSCHIE, ELMER	SEIFERT, CLARA
AMMONS, ELIZABETH	FRENCH, LEWIS	LASSITER, DOLLY	SHIPP, THERESA
ANDREWS, CRUMP	GARDNER, ELWOOD	LAUGHINGHOUSE, AN'BEL	SMALLWOOD, FRANCES
ANDERSON, MARY	GASKINS, WARDIE	LOVELACE, EDWARD	SMITH, HENRY
BANKS, EDYTHE	GASKINS, DAPHNE	LYNCH, HERMAN	SMITH, JOHNETTE
BENGEL, VIRGINIA	GILLETTE, ANNIE	MAINE, MAY	SMITH, MARY LOUISE
BENNETT, MACK	GODWIN, MARGUERITE	MACDONALD, HUGHRENA	SMITH, LOUISE
BLEDSE, CATHERINE	GOSSARD, BETTY	MEADOWS, ALEX	SMITH, ROBERT
BOYD, PAULINE	GRIFFIN, WILLIAM	MERCER, KENNETH	SMITH, ROSALIE
BOWDEN, MATILDA	GRIFFIN, EXUM	MESSICK, ANGELINE	STAPLEFORD, M. LOUISE
BRAYSHAW, KATHARINE	GUERRANT, SEWELL	MORRIS, COOLIDGE	STALLINGS, DONALD
BREWER, LIZETTE	HALL, ALMA	MULLEN, LEWIS	STALLINGS, DANIEL
BRINSON, MARTHA	HAMILTON, ALICE	NEWMAN, CALLIE	STALLINGS, EDWARD
BRINKLEY, MARY	HARGETT, TOMMY	ODUM, ARCHIE	STYRON, WILLIAM
BRINKLEY, SARAH	HARRIS, BOBBY	OWENS, ALLEN	SUSKINS, ESTHER
BROOKS, JIMMY	HAWKINS, ELMER	PARKER, J. R.	SWINDELL, LENA
BROOKS, MARGARET	HENDERSON, KENNETH	PARKER, DICK	TAYLOR, ALBERT
CARON, BILLY	HOELL, JAMES	PATTEN, ALLEN	TAYLOR, CHARLES
DAUGHERTY, RAYMOND	HOLLAND, MARY BRENT	PATTERSON, JOE	THOMPSON, RAYMOND
DAVIS, TOM	HOPEWELL, VERA	PERKINS, EZRA	TOLSON, GENEVIEVE
DAWSON, BILLY	HUDSON, R. E.	PETERSON, VELMA	WEATHERLY, ABBOTT
DILL, JOHN	HURLEY, MELBA	POWELL, MILDRED	WEST, HAZEL
DILL, MARCUS	HURST, BEN	RACHIDE, ROSA	WETHERINGTON, PAT'SON
DICKINSON, FRANCIS	JENNETTE, KIT	RICHARDSON, ROSALIE	WHITE, LOUISE
DISOSWAY, DONALD	JONES, ELIZABETH	RICHARDSON, ERNEST	WHITEURST, MARGARET
EDWARDS, LAURA	JONES, GRETCHEN	ROBERTS, FRANCES	WILCOX, PAT
EPPELSON, LULU	KAFER, ROBERTHA	SALTER, DAVID	WILLIS, JULIA
FARIS, CLAUDE	LATHAM, NINA	SANSONE, DOROTHY	WILLIAMS, MARY
			WILSON, EMMIE

MEMORIES



TRIANGULAR DEBATE

Affirmative—ERNEST WOOD, ALBERT BELL. *Negative*—JACK TOLSON, ALBERT SALEM
Coaches—MISS BLACKWELDER, MR. SHIELDS.



BOYS' BASKET-BALL SQUAD

Top—HAGOOD, Manager METZ, CHANCE, EVERHART, Coach ALLSTON, STALLINGS.
Bottom—ODOM, Captain DUNN, TOLSON.

MEMORIES



FRESHMAN CLASS

BILLY DOWDY *President*
 AMY WILLIAMS *Secretary*

CLASS ROLL

ADAMS, HELEN	EDWARDS, REVENEL	LUPTON, VELMA	SANDLIN, CARRIE
ARANT, LOTTIE	FRENCH, CHARLES	MAINE, TALLIE	SCALES, GILBERT
ARMSTRONG, WOODROW	GARRISON, MADIE	MARSHBURN, ANNIE L.	SHAW, TURNER
AVERY, VIRGINIA	GASKINS, JAMES	MAY, CECIL	SIMPSON, FRED
BANKS, JESSIE	GIBBS, JANE	MEADOWS, WADE	SIMONDS, CORINNA
BANKS, NELSON	GRANTHAM, FAYE	MCCOY, JIMMY	SLATER, ELIZABETH
BASNIGHT, BARTLETT	GRANTHAM, HELEN	MCDONALD, JESSIE	SMALLWOOD, JULIA B.
BAXTER, NAT	GRIMSLEY, JESSIE	MCSORLEY, EUGENE	SMITH, ELIZABETH
BAXTER, THEODORE	GWALTNEY, AMY	MORRIS, HELEN	SPARROW, KATHERINE
BIRSCH, FRANCES	HARDY, EDNA	MORRIS, PHYLLIS	STALLINGS, KATHLEEN
BLADES, ALICE	HARGETT, IRENE	MOORE, MYRTLE	STEPHENS, MARJORIE
BLALOCK, ROM	HARKER, CAROL	MOORE, LUCILLE	STEVENSON, HELEN
BLOW, TOM	HARTSFIELD, JOHN	NELSON, SARA	STYRON, ELIZABETH
BOYD, CATHERINE	HARPER, HARRY	NELSON, SHEILA	SUTTON, FRANCES
BRAY, LUCY	HIGGINS, WILLIAM	NEWKIRK, EDWARD	TAYLOR, DORIS LEE
BRAYSHAW, LACY	HIMMELMAN, EDWARD	OLIVER, BRAXTON	TAYLOR, ELIZABETH
BRINKLEY, EDMOND	HIMMELMAN, GEORGE	OLIVER, HERBERT	TOLER, ELLA
BRINSON, LILA	HUFF, CATHERINE	PATE, ELMER	TYSON, ROBERT
BROOKS, ELNORA	HUFF, WILLARD	PATE, SARAH	WEISS, MARGARET
BROOKS, LINWOOD	HUMPHREY, HAZEL	PAUL, RUBY	WHITEHURST, MARY C.
BURKIART, VESTAL	HUNNINGS, BILL	POOLE, DOROTHY	WHITEHURST, ROBERT
CARRAWAY, LUCILLE	HURTT, BILLY	PARKER, AUDREY	WHITFORD, INEZ
CASH, RICHARD	JACKSON, THOMAS	PARKER, MARJORIE	WHITFORD, JAMES
CLARK, BEVERLY	JACOBS, HILDA	PEEK, DOUGLAS	WHITLEY, ROBERT
CONDERMAN, ROBERT	JOHNSON, RUTH	PRITCHETT, JOHN	WILCOX, BOB
CONNER, MARY EMMA	JONES, JOHN	REID, DOROTHY	WILLIAMS, ELIZABETH
DEWEY, PAULINE	KEEN, HELLEN	ROUNTREE, JULIA	WILLIAMS, HELEN
DIXON, GLENWOOD	LANCASTER, MELVINA	ROWE, LENA	WILLIAMS, IRENE
DOWDY, BILLY	LEE, HELEN	RUSSELL, BILLY	WILLIS, CAROLINE
EDMUNDS, COPELAND	LOCKEY, FRED	SANDERS, SHIRLEY	WILLIS, MARY TURNER
EDMUNDS, HARRY	LUPTON, CECIL	SANDERLIN, DOROTHY	WILLIS, MELBA



BOYS' HI-Y CLUB

*President, JACK DUNN; Vice-President, OSCAR BRINSON; Secretary, ALBERT SALEM;
Treasurer, ERNEST WOOD; Leader, L. J. GOSSARD; Faculty Adviser, F. J. ALLSTON.*



GIRLS' HI-Y CLUB

*President, MARY NUNN; Vice-President, ELEANOR STEVENSON; Secretary, SARA MITCHELL;
Treasurer, MILDRED TYSON; Leader, L. J. GOSSARD.*

MEMORIES



BASEBALL SQUAD

Front Row—PATTERSON, HALL, Mascot; LANSCH, LaFRAGE. *Second Row*—ABERLY, WHITE, BRADY, DAWSON, TOLSON, M. SMITH, TAYLOR, STALLINGS. *Third Row*—Coach ALLSTON, ODOM, FULLER, MR. JONES, W. HAGOOD, CANNON, WIGGS, BLEDSOE.



STUDENT COUNCIL

President, OSCAR BRINSON; *Vice-President*, VIRGINIA MCSORLEY; *Secretary and Treasurer*, SARA MITCHELL.

TRY

MORRIS' SERVICE

FOOT OF TRENT RIVER BRIDGE

NEW BERN, N. C.

SAM LIPMAN & SON

WHOLESALE

80 S. FRONT ST.

PHONE 1005

RETAIL

67-69 MIDDLE ST.

PHONE 203

NEW BERN, N. C.

Do Business With

**EASTERN
BANK & TRUST
COMPANY**

NEW BERN

MAYSVILLE

BAYBORO



**"Vegetables..
10 days earlier"**

"Vigoro on our tomatoes, cabbages, other vegetables, gave most unusual results—for size, quality, taste," states D. J. Thigpen, Georgiana, Ala. "They matured 10 days to 2 weeks earlier."

Easy, this kind of success, with Vigoro! Better lawns, flowers, shrubs, trees, too. Complete, *balanced*, Vigoro supplies *all* elements of plant food for early growth, perfect development. Clean, *odorless*. Costs only 10c to 20c per 100 sq. ft. Sold where you buy lawn-garden supplies.

Order today!

VIGORO
COMPLETE PLANT FOOD

A SWIFT & COMPANY product

For sale at

LATTA'S

*REAL DRUG STORE
SERVICE*

**WOOD DRUG
COMPANY**

140 MIDDLE STREET

**SCOTT'S
SERVICE
SATISFIES**

*A GOOD PLACE TO
TRADE*

Compliments of

**GASKINS
SODA SHOP**

NEW BERN, N. C.

DR. J. O. BAXTER, SR.

Specialist

THE EYE ONLY

NEW BERN, N. C.



THE
NEW BERN KIWANIS
CLUB

*Pledges its support to THE BRUIN
and other worthwhile activities of
New Bern High School.*

CAROLINA ENGRAVING CO.

OF RALEIGH, Inc.

Photo-Engravers

DESIGNERS
RETOUCHERS
ILLUSTRATORS



HALFTONES
LINE AND
COLOR WORK

An Uptodate Fully Equipped Photo-
Engraving Plant, To Handle The
Engravings of The Progressive
Advertisers and Publishers

*This Is The Day of Illustrative
Advertising*

ILLUSTRATE — ADVERTISE

Third Floor Mechanics Bank Building
Phone 64 P. O. Box 553
Raleigh, North Carolina

H. M. GAINES, Manager

ELECTRIC SUPPLIES —
— ELECTRIC WIRING
Radio Tubes—RADIOS—Radio Supplies

NEW BERN ELECTRIC
SUPPLY COMPANY

PHONE 297 53 POLLOCK STREET

STAR GROCERY
COMPANY

FANCY GROCERIES

56 MIDDLE STREET PHONE 57
NEW BERN, N. C.

FOR BETTER EATS

ROYAL CAFE

MIDDLE STREET

NEW BERN, . . . NORTH CAROLINA

*THE PLACE FOR
REFRESHMENTS*

THE
DRUG SUNDRY SHOP

CASH CUT RATE

PHONE 388 DELIVERY SERVICE

DRINK BOTTLED

Coca-Cola

THE PERFECT ANSWER TO
THIRST

DOWDY
FURNITURE COMPANY

NEW BERN'S
BIGGEST AND BEST

CALL ON
OWEN G. DUNN

for

GOOD PRINTING
69 CRAVEN ST.
NEW BERN, . . N. C.

PAUL
GROCERY CO.
WHOLESALE
CANDIES—TOBACCO
CIGARETTES

J. H. PARKER &
COMPANY
SEED and FEED
PHONE 184 23 MIDDLE ST.

TURNER-TOLSON
FURNITURE
COMPANY

"HOME OUTFITTERS"

NEW BERN, N. C.

USE ELECTRICITY
for
LIGHTING—HEATING—COOKING

WATER & LIGHT DEPARTMENT
CITY OF NEW BERN

COMPLIMENTS
of

TAYLOR
OLDSMOBILE CO.

STALLINGS BROTHERS

PLUMBING
AND HEATING CONTRACTORS

70 CRAVEN STREET
NEW BERN, . . NORTH CAROLINA



A WHOLE FOOD

COMPLIMENTS

of

HILL'S

KNOWN FOR

GOOD CLOTHES

*WHERE YOUR DOLLAR GOES
THE FARTHEST*

**CHARLES
STORES COMPANY, INC.**

*THE SHORTEST ROUTE TO
BETTER CROPS*

**DAVISON-TRENT
FERTILIZER COMPANY**

JAMES CITY, N. C.

THE TIMES

*EASTERN CAROLINA'S
MOST UNUSUAL AND BEST READ
WEEKLY*

\$1.50 PER YEAR

KID HOMAN, Editor

THE VOGUE
LADIES' READY-TO-WEAR
STORE

- *Everything to Your Heart's Desire* -

QUALITY TELLS EVERY TIME
WELFARE MARKET
70 MIDDLE STREET

PHONES 774-775

NEW BERN, N. C.

